



**MANUAL
PHOTO MEASUREMENT
AMBROISE TRIPLE-MODE ARM
ORTHOSIS (ATA)**

Twekkeler Es 24, 7547 SM Enschede, The Netherlands
tel: +31 53 4302836 | info@ambroise.nl | www.ambroise.nl
www.youtube.com/AmbroiseHolland | www.facebook.com/AmbroiseHolland

Photo measurement for the Ambroise Triple-mode Arm orthosis (ATA)

Focus points by the preparation of the photo measurement



A. Place the patient in front of a plain background.



B. Make sure the affected arm is fully in view.



C. Take the measurement label.



D. Stick the measurement label sagittal on the upper arm.



E. Stick the second measurement lable frontal on the upper arm.



F. Now make sure the thumb is pointing forward.

Focus points when taking the photo



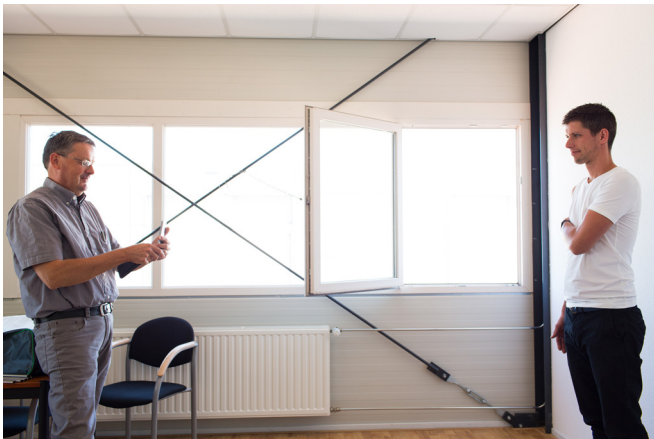
G. Stick the third measurement label frontal on the forearm.



H. Stick the fourth measurement label sagittal on the forearm



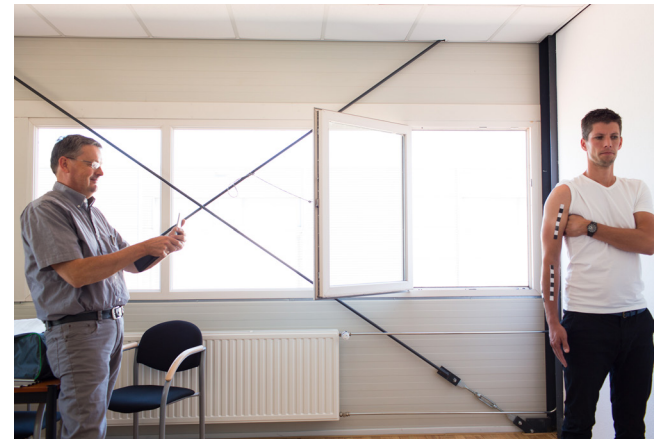
I. Hold a hand under the armpit, as high as possible, so the arm does not touch the trunk, and the top of the arm is visible.



F. Take a frontal photo at a distance of at least 1 meter (preferably 2 meters). Hold the camera vertically and at elbow height.



G. This is the frontal photo.



H. Take a sagittal photo at a distance of at least 1 meter (preferably 2 meters). Hold the camera vertically and at elbow height.



I. This is the sagittal photo.

**Send the sagittal and frontal photo
together with the order to:
info@ambroise.nl**

. Ambroise

Twekkeler Es 24, 7547 SM Enschede, The Netherlands
tel: +31 (0)53 4302 836 | info@ambroise.nl | www.ambroise.nl
www.youtube.com/AmbroiseHolland | www.facebook.com/AmbroiseHolland
